

City of South Lake Tahoe Transient Occupancy Tax Report

Revenue Collected in September 2017 for the Month of August 2017

Monthly Activity:	Collected in This Month 2017	Collected in This Month 2016	Month Variance	% Change
Motels	\$425,814.21	\$392,618.63	\$33,195.58	8.45%
Delinquent Motel Payments	\$5,097.38	\$4,344.89	\$752.49	17.32%
Property Management VHR	\$281,524.64	\$271,261.55	\$10,263.09	3.78%
Individual Property Owners (VHR)	\$17,308.53	\$29,761.94	(\$12,453.41)	-41.84%
Shared VHRs	\$162.46	\$0.00	\$162.46	100.00%
Campground	\$4,707.70	\$3,080.16	\$1,627.54	100.00%
Promotion 2%	\$244,871.64	\$233,689.06	\$11,182.58	4.79%
TOT Totals	\$979,486.56	\$934,756.23	\$44,730.33	4.79%
Total General Fund TOT	\$979,486.56	\$934,756.23	\$44,730.33	4.79%
City Redevelopment TOT	\$244,871.64	\$233,689.06	\$11,182.58	4.79%
Redevelopment Area TOT	\$654,165.41	\$679,034.70	(\$24,869.29)	-3.66%
Total General Fund Monthly Collections	\$1,878,523.61	\$1,847,479.99	\$31,043.62	1.68%
Restricted Measure P TOT 2%	\$358,005.45	\$0.00	\$358,005.45	100.00%

Fiscal Year-to-Date:	2016/17	2015/16	Fiscal Year Variance	% Change
Motels	\$2,684,672.39	\$2,634,937.75	\$49,734.64	1.89%
Delinquent Motel Payments	\$36,877.72	\$37,983.76	(\$1,106.04)	-2.91%
Property Management VHR	\$1,979,071.89	\$1,794,572.39	\$184,499.50	10.28%
Individual Property Owners	\$658,704.67	\$636,207.27	\$22,497.40	3.54%
Shared VHRs	\$162.46	\$0.00	\$162.46	100.00%
Campground	\$42,234.15	\$20,825.82	\$21,408.33	102.80%
Promotion 2%	\$1,800,847.60	\$1,708,838.02	\$92,009.58	5.38%
TOT Totals	\$7,202,570.88	\$6,833,365.01	\$369,205.87	5.40%
Total General Fund TOT	\$7,202,570.88	\$6,833,365.01	\$369,205.87	5.40%
City Redevelopment TOT	\$1,800,847.60	\$1,708,838.02	\$92,009.58	5.38%
Redevelopment Area TOT	\$5,740,003.63	\$5,302,429.38	\$437,574.25	8.25%
Total to Date General Fund Collections	\$14,743,422.11	\$13,844,632.41	\$898,789.70	6.49%
Motel and VHR TOT Audit Collections	\$163,221.02			
Total TOT Collections	\$14,906,643.13			
Restricted Measure P TOT 2%	\$2,150,752.85	\$0.00	\$2,150,752.85	100.00%

TOT is collected and recorded as revenue in the General Ledger in the month following the actual motel stay.

Motel and VHR TOT Audit Collections are actual amounts collected. Does not include balances owed but not yet paid.

Restricted Measure P TOT 2% was implemented 1/1/2017.

City of South Lake Tahoe

Room Rentals By Zone Month of August 2017

		<i>Receipts</i>	<i>Taxable Rents</i>	Total Room Nights Available	Room Nights Rented	Occupancy Percentage	Average Room Price
		Gross Rentals Reported	Net Rentals Reported				
Zone 1	2017	\$8,616,984	\$8,484,701	108,159	48,794	45%	\$177
	2016	\$8,662,133	\$8,572,197	107,198	49,687	46%	\$174
	Variance	(\$45,149)	(\$87,496)	961	(893)	-1%	\$3
Zone 2	2017	\$1,756,679	\$1,701,332	34,999	12,973	37%	\$135
	2016	\$1,773,827	\$1,740,993	38,781	14,016	36%	\$127
	Variance	(\$17,148)	(\$39,661)	(3,782)	(1,043)	1%	\$8
Zone 3	2017	\$1,375,282	\$1,349,752	16,492	7,438	45%	\$185
	2016	\$1,408,509	\$1,384,389	16,492	7,939	48%	\$177
	Variance	(\$33,227)	(\$34,637)	0	(501)	-3%	\$8
Zone 4	2017	\$405,378	\$289,693	11,997	3,880	32%	\$104
	2016	\$370,252	\$273,237	11,966	3,586	30%	\$103
	Variance	\$35,126	\$16,456	31	294	2%	\$1
Zone 5	2017	\$190,819	\$162,149	6,262	1,316	21%	\$145
	2016	\$171,194	\$163,504	6,758	1,248	18%	\$137
	Variance	\$19,625	(\$1,355)	(496)	68	3%	\$8
Total All Zones	2017	\$12,345,142	\$11,987,627	177,909	74,401	42%	\$166
	2016	\$12,385,915	\$12,134,320	181,195	76,476	42%	\$162
	Variance	(\$40,773)	(\$146,693)	(3,286)	(2,075)	0%	\$4

Zone Descriptions:

- Zone 1 Stateline Area
- Zone 2 Ski Run, Heavenly and Bijou Areas
- Zone 3 Al Tahoe Area
- Zone 4 Sierra Tract, East Y Area
- Zone 5 West Y and Emerald Bay Road Areas

Vacation Home Rentals - Managed by Rental Agents

	<i>Taxable Rents</i>	Total Units Available	Total Units Rented	Occupancy Percentage	Average Room Price
	Net Rentals Reported				
2017	\$4,996,382.12	29,512	13,718	46%	\$364.22
2016	\$4,691,767.76	28,613	13,266	46%	\$353.67
Variance	\$304,614.36	899	452	0%	\$10.55

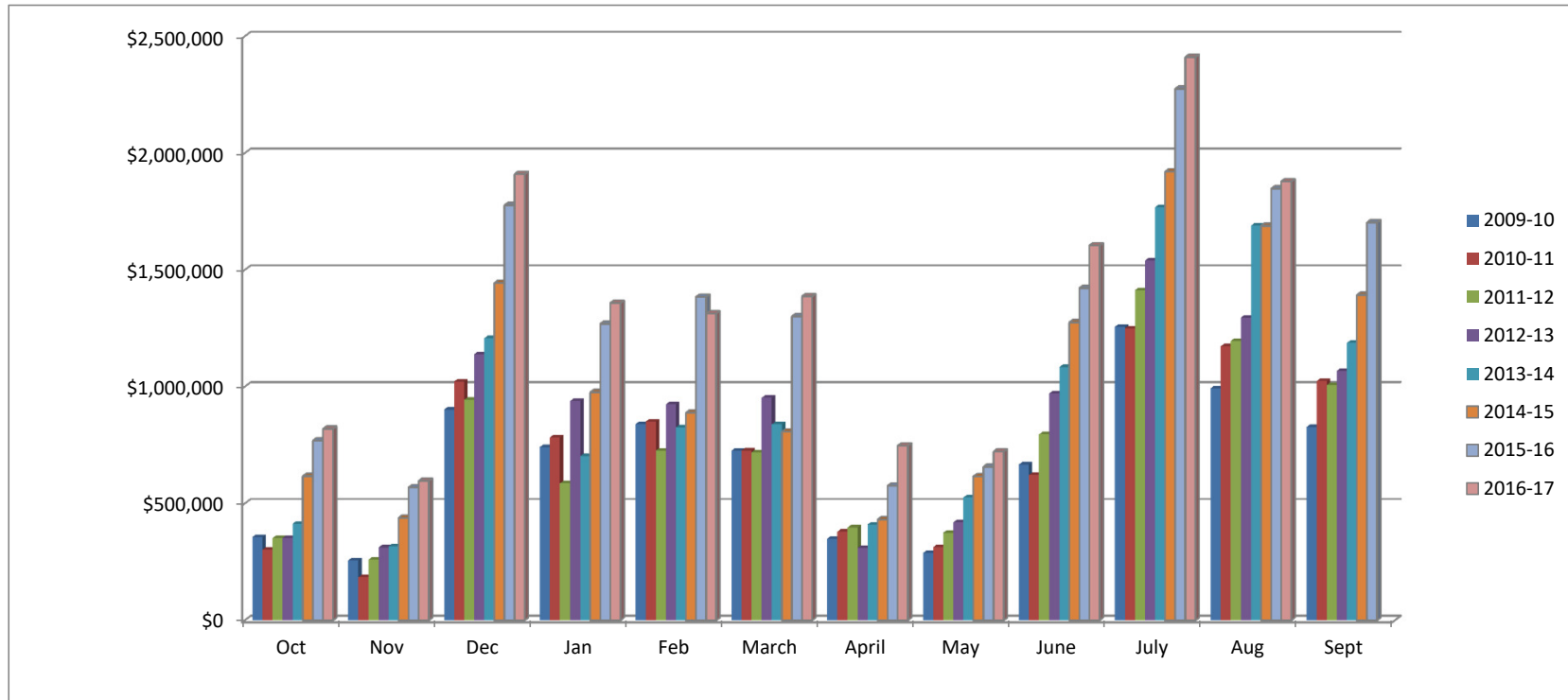
City of South Lake Tahoe

Room Rentals By Unit Size Month of August 2017

		<i>Receipts</i>	<i>Taxable rents</i>	Total Rooms Nights Available	Room Nights Rented	Occupancy Percentage	Average Room Price
		Gross Rentals Reported	Net Rentals Reported				
Units 1-15	2017	\$524,309	\$439,194	10,664	2,968	28%	\$177
	2016	\$457,122	\$378,290	10,478	2,528	24%	\$181
	Variance	\$67,187	\$60,904	186	440	4%	(\$4)
Units 16-30	2017	\$805,310	\$583,730	25,203	4,748	19%	\$170
	2016	\$720,637	\$598,339	24,428	4,824	20%	\$149
	Variance	\$84,673	(\$14,609)	775	(76)	-1%	\$21
Units 31-50	2017	\$1,008,106	\$973,081	16,244	7,026	43%	\$143
	2016	\$876,199	\$842,779	17,422	6,649	38%	\$132
	Variance	\$131,907	\$130,302	(1,178)	377	5%	\$11
Units 51-75	2017	\$1,735,983	\$1,723,683	26,412	13,902	53%	\$125
	2016	\$1,808,951	\$1,796,851	25,265	15,098	60%	\$120
	Variance	(\$72,968)	(\$73,168)	1,147	(1,196)	-7%	\$5
Units 76-125	2017	\$2,610,428	\$2,610,428	25,079	13,900	55%	\$188
	2016	\$2,839,854	\$2,839,854	29,295	15,932	54%	\$178
	Variance	(\$229,426)	(\$229,426)	(4,216)	(2,032)	1%	\$10
Units 126+	2017	\$5,661,006	\$5,657,511	74,307	31,857	43%	\$178
	2016	\$5,683,152	\$5,678,207	74,307	31,445	42%	\$181
	Variance	(\$22,146)	(\$20,696)	0	412	1%	(\$3)
Total All Unit Sizes	2017	\$12,345,142	\$11,987,627	177,909	74,401	42%	\$166
	2016	\$12,385,915	\$12,134,320	181,195	76,476	42%	\$162
	Variance	(\$40,773)	(\$146,693)	(3,286)	(2,075)	0%	\$4

**City of South Lake Tahoe
TOT Collected
(Excluding audit collections and 2% Measure P TOT)**

	<i>Oct</i>	<i>Nov</i>	<i>Dec</i>	<i>Jan</i>	<i>Feb</i>	<i>March</i>	<i>April</i>	<i>May</i>	<i>June</i>	<i>July</i>	<i>Aug</i>	<i>Sept</i>	<i>Year to Date Total</i>
2009-10	\$356,210	\$256,067	\$901,625	\$741,264	\$839,673	\$725,826	\$349,303	\$287,825	\$666,724	\$1,256,002	\$992,942	\$827,005	\$8,200,466
2010-11	\$302,804	\$183,646	\$1,022,085	\$782,771	\$850,362	\$726,854	\$379,079	\$312,732	\$621,865	\$1,249,500	\$1,172,591	\$1,023,480	\$8,627,769
2011-12	\$351,807	\$259,005	\$944,112	\$586,008	\$726,215	\$718,847	\$396,638	\$374,560	\$795,750	\$1,412,969	\$1,195,854	\$1,006,606	\$8,768,372
2012-13	\$352,360	\$311,214	\$1,139,117	\$938,361	\$924,117	\$952,435	\$309,956	\$419,142	\$970,739	\$1,539,841	\$1,295,749	\$1,067,658	\$10,220,690
2013-14	\$413,240	\$316,321	\$1,207,678	\$702,471	\$826,225	\$838,573	\$409,738	\$525,592	\$1,083,420	\$1,768,106	\$1,689,276	\$1,187,000	\$10,967,640
2014-15	\$616,901	\$438,053	\$1,443,697	\$975,930	\$888,351	\$807,169	\$431,120	\$615,934	\$1,275,041	\$1,920,591	\$1,688,228	\$1,392,562	\$12,493,577
2015-16	\$768,980	\$568,608	\$1,776,411	\$1,268,767	\$1,384,083	\$1,300,922	\$575,701	\$656,965	\$1,421,739	\$2,274,978	\$1,847,480	\$1,702,865	\$15,547,498
2016-17	\$819,179	\$596,552	\$1,909,793	\$1,358,224	\$1,313,140	\$1,386,385	\$747,178	\$722,225	\$1,604,192	\$2,410,778	\$1,878,524		\$14,746,172



City of South Lake Tahoe Rooms Rented

	<i>Oct</i>	<i>Nov</i>	<i>Dec</i>	<i>Jan</i>	<i>Feb</i>	<i>March</i>	<i>April</i>	<i>May</i>	<i>June</i>	<i>July</i>	<i>Aug</i>	<i>Sept</i>	<i>Year to Date Total</i>
2009-10	28,750	20,908	39,355	41,066	43,923	39,899	26,692	25,764	41,439	65,785	55,781	46,115	475,477
2010-11	28,602	20,506	44,643	44,718	46,656	38,016	29,562	25,006	38,882	67,447	65,884	52,075	501,997
2011-12	30,378	21,282	38,079	28,979	38,920	40,149	30,029	29,478	47,736	64,847	58,558	51,018	479,453
2012-13	30,183	23,447	46,442	46,215	39,121	40,558	25,427	33,031	50,836	70,868	63,567	49,721	519,416
2013-14	33,894	22,228	41,156	32,355	40,951	40,994	31,015	37,413	54,548	76,667	69,787	49,168	530,176
2014-15	43,162	28,676	48,200	45,142	38,962	36,820	31,934	42,741	59,041	75,745	70,026	59,448	579,897
2015-16	51,945	36,173	56,669	57,800	56,716	51,247	37,868	41,535	63,855	84,039	76,476	65,463	679,786
2016-17	52,485	35,490	55,715	57,917	51,771	55,719	47,012	43,964	66,485	87,416	74,401		628,375

