

City of South Lake Tahoe Transient Occupancy Tax Report

Revenue Collected in August 2017 for the Month of July 2017

Monthly Activity:	Collected in This Month 2017	Collected in This Month 2016	Month Variance	% Change
Motels	\$478,504.87	\$507,571.59	(\$29,066.72)	-5.73%
Delinquent Motel Payments	\$2,296.48	\$4,729.54	(\$2,433.06)	-51.44%
Property Management VHR	\$427,127.57	\$375,032.14	\$52,095.43	13.89%
Individual Property Owners	\$7,573.64	\$15,313.72	(\$7,740.08)	-50.54%
Campground	\$7,477.04	\$4,664.80	\$2,812.24	100.00%
Promotion 2%	\$307,659.86	\$302,437.27	\$5,222.59	1.73%
TOT Totals	\$1,230,639.46	\$1,209,749.06	\$20,890.40	1.73%
Total General Fund TOT	\$1,230,639.46	\$1,209,749.06	\$20,890.40	1.73%
City Redevelopment TOT	\$307,659.86	\$302,437.27	\$5,222.59	1.73%
Redevelopment Area TOT	\$872,479.15	\$762,791.51	\$109,687.64	14.38%
Total General Fund Monthly Collections	\$2,410,778.47	\$2,274,977.84	\$135,800.63	5.97%
Restricted Measure P TOT 2%	\$465,260.94	\$0.00	\$465,260.94	100.00%

Fiscal Year-to-Date:	2016/17	2015/16	Fiscal Year Variance	% Change
Motels	\$2,258,858.18	\$2,242,319.12	\$16,539.06	0.74%
Delinquent Motel Payments	\$31,780.34	\$33,638.87	(\$1,858.53)	-5.52%
Property Management VHR	\$1,697,547.25	\$1,523,310.84	\$174,236.41	11.44%
Individual Property Owners	\$641,396.14	\$606,445.33	\$34,950.81	5.76%
Campground	\$37,526.45	\$17,745.66	\$19,780.79	111.47%
Promotion 2%	\$1,555,975.96	\$1,475,148.96	\$80,827.00	5.48%
TOT Totals	\$6,223,084.32	\$5,898,608.78	\$324,475.54	5.50%
Total General Fund TOT	\$6,223,084.32	\$5,898,608.78	\$324,475.54	5.50%
City Redevelopment TOT	\$1,555,975.96	\$1,475,148.96	\$80,827.00	5.48%
Redevelopment Area TOT	\$5,085,838.22	\$4,623,394.67	\$462,443.55	10.00%
Total to Date General Fund Collections	\$12,864,898.50	\$11,997,152.41	\$867,746.09	7.23%
Motel and VHR TOT Audit Collections	\$162,221.02			
Total TOT Collections	\$13,027,119.52			
Restricted Measure P TOT 2%	\$1,792,747.40	\$0.00	\$1,792,747.40	100.00%

TOT is collected and recorded as revenue in the General Ledger in the month following the actual motel stay.

Motel and VHR TOT Audit Collections are actual amounts collected. Does not include balances owed but not yet paid.

Restricted Measure P TOT 2% was implemented 1/1/2017.

City of South Lake Tahoe

Room Rentals By Zone Month of July 2017

		<i>Receipts</i>	<i>Taxable Rents</i>	Total Room Nights Available	Room Nights Rented	Occupancy Percentage	Average Room Price
		Gross Rentals Reported	Net Rentals Reported				
Zone 1	2017	\$11,341,809	\$11,236,411	108,004	57,813	54%	\$196
	2016	\$10,160,076	\$10,056,874	108,438	53,958	50%	\$188
	Variance	\$1,181,733	\$1,179,537	(434)	3,855	4%	\$8
Zone 2	2017	\$2,292,889	\$2,235,574	34,286	15,008	44%	\$153
	2016	\$2,358,241	\$2,308,478	38,781	15,973	41%	\$148
	Variance	(\$65,352)	(\$72,904)	(4,495)	(965)	3%	\$5
Zone 3	2017	\$1,837,585	\$1,817,310	16,492	8,660	53%	\$212
	2016	\$1,743,520	\$1,719,625	16,492	8,220	50%	\$212
	Variance	\$94,065	\$97,685	0	440	3%	\$0
Zone 4	2017	\$509,129	\$389,731	11,997	4,141	35%	\$123
	2016	\$495,183	\$401,336	11,966	4,358	36%	\$114
	Variance	\$13,946	(\$11,605)	31	(217)	-1%	\$9
Zone 5	2017	\$271,236	\$244,996	6,758	1,794	27%	\$151
	2016	\$270,370	\$240,715	6,758	1,530	23%	\$177
	Variance	\$866	\$4,281	0	264	4%	(\$26)
Total All Zones	2017	\$16,252,648	\$15,924,022	177,537	87,416	49%	\$186
	2016	\$15,027,390	\$14,727,028	182,435	84,039	46%	\$179
	Variance	\$1,225,258	\$1,196,994	(4,898)	3,377	3%	\$7

Zone Descriptions:

- Zone 1 Stateline Area
- Zone 2 Ski Run, Heavenly and Bijou Areas
- Zone 3 Al Tahoe Area
- Zone 4 Sierra Tract, East Y Area
- Zone 5 West Y and Emerald Bay Road Areas

Vacation Home Rentals - Managed by Rental Agents

	<i>Taxable Rents</i>	Total Units Available	Total Units Rented	Occupancy Percentage	Average Room Price
	Net Rentals Reported				
2017	\$7,187,051.45	29,450	18,023	61%	\$398.77
2016	\$6,721,393.72	28,613	17,109	60%	\$392.86
Variance	\$465,657.73	837	914	1%	\$5.91

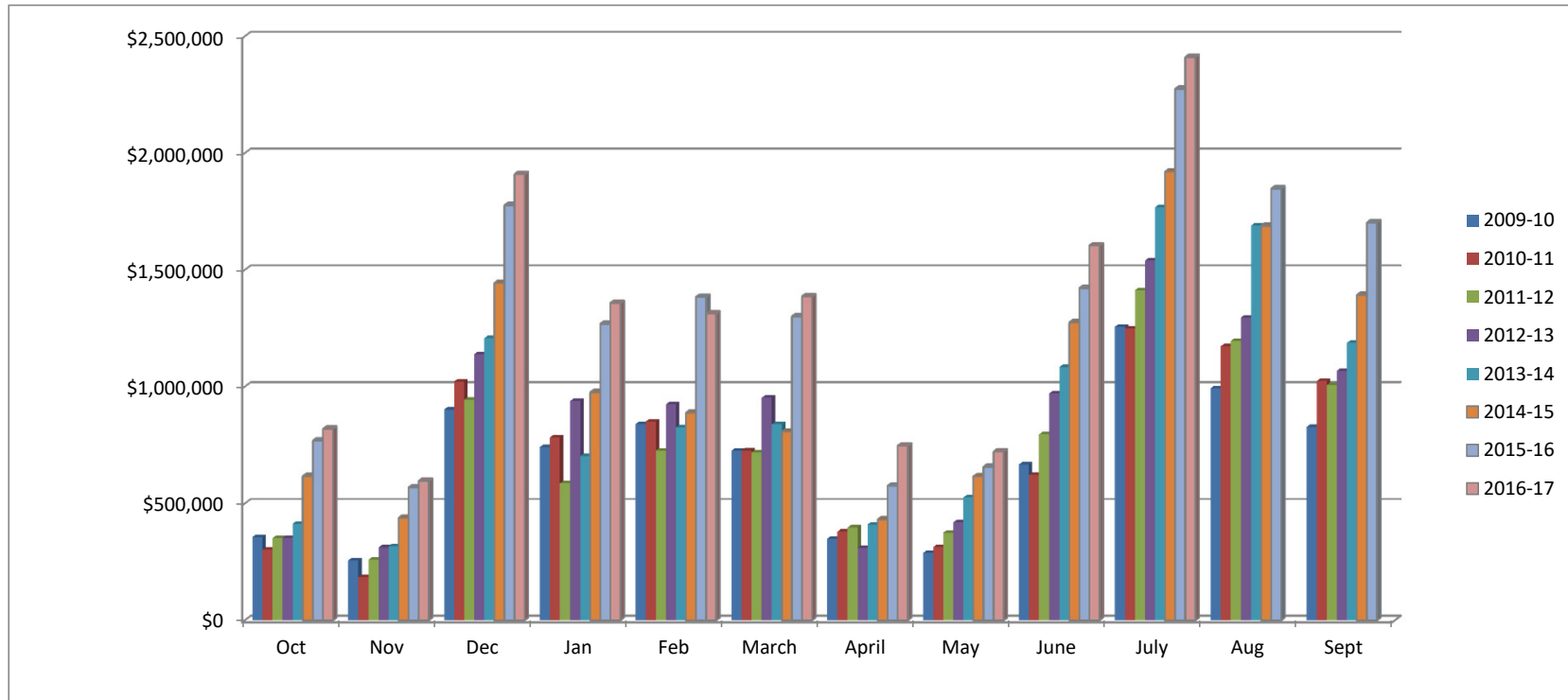
City of South Lake Tahoe

Room Rentals By Unit Size Month of July 2017

		<i>Receipts</i>	<i>Taxable rents</i>	Total Rooms Nights Available	Room Nights Rented	Occupancy Percentage	Average Room Price
		Gross Rentals Reported	Net Rentals Reported				
Units 1-15	2017	\$661,033	\$578,113	10,509	3,528	34%	\$187
	2016	\$566,256	\$474,713	10,478	2,909	28%	\$195
	Variance	\$94,777	\$103,400	31	619	6%	(\$8)
Units 16-30	2017	\$1,030,047	\$819,759	24,986	5,753	23%	\$179
	2016	\$978,993	\$823,691	24,428	5,790	24%	\$169
	Variance	\$51,054	(\$3,932)	558	(37)	-1%	\$10
Units 31-50	2017	\$1,301,449	\$1,284,074	16,244	8,293	51%	\$157
	2016	\$1,151,387	\$1,115,215	18,662	7,655	41%	\$150
	Variance	\$150,062	\$168,859	(2,418)	638	10%	\$7
Units 51-75	2017	\$2,464,504	\$2,450,656	26,412	16,998	64%	\$145
	2016	\$2,425,368	\$2,412,968	25,265	17,342	69%	\$140
	Variance	\$39,136	\$37,688	1,147	(344)	-5%	\$5
Units 76-125	2017	\$3,389,103	\$3,389,103	25,079	15,731	63%	\$215
	2016	\$3,482,048	\$3,482,048	29,295	16,798	57%	\$207
	Variance	(\$92,945)	(\$92,945)	(4,216)	(1,067)	6%	\$8
Units 126+	2017	\$7,406,512	\$7,402,317	74,307	37,113	50%	\$200
	2016	\$6,423,338	\$6,418,393	74,307	33,545	45%	\$191
	Variance	\$983,174	\$983,924	0	3,568	5%	\$9
Total All Unit Sizes	2017	\$16,252,648	\$15,924,022	177,537	87,416	49%	\$186
	2016	\$15,027,390	\$14,727,028	182,435	84,039	46%	\$179
	Variance	\$1,225,258	\$1,196,994	(4,898)	3,377	3%	\$7

**City of South Lake Tahoe
TOT Collected
(Excluding audit collections and 2% Measure P TOT)**

	<i>Oct</i>	<i>Nov</i>	<i>Dec</i>	<i>Jan</i>	<i>Feb</i>	<i>March</i>	<i>April</i>	<i>May</i>	<i>June</i>	<i>July</i>	<i>Aug</i>	<i>Sept</i>	<i>Year to Date Total</i>
2009-10	\$356,210	\$256,067	\$901,625	\$741,264	\$839,673	\$725,826	\$349,303	\$287,825	\$666,724	\$1,256,002	\$992,942	\$827,005	\$8,200,466
2010-11	\$302,804	\$183,646	\$1,022,085	\$782,771	\$850,362	\$726,854	\$379,079	\$312,732	\$621,865	\$1,249,500	\$1,172,591	\$1,023,480	\$8,627,769
2011-12	\$351,807	\$259,005	\$944,112	\$586,008	\$726,215	\$718,847	\$396,638	\$374,560	\$795,750	\$1,412,969	\$1,195,854	\$1,006,606	\$8,768,372
2012-13	\$352,360	\$311,214	\$1,139,117	\$938,361	\$924,117	\$952,435	\$309,956	\$419,142	\$970,739	\$1,539,841	\$1,295,749	\$1,067,658	\$10,220,690
2013-14	\$413,240	\$316,321	\$1,207,678	\$702,471	\$826,225	\$838,573	\$409,738	\$525,592	\$1,083,420	\$1,768,106	\$1,689,276	\$1,187,000	\$10,967,640
2014-15	\$616,901	\$438,053	\$1,443,697	\$975,930	\$888,351	\$807,169	\$431,120	\$615,934	\$1,275,041	\$1,920,591	\$1,688,228	\$1,392,562	\$12,493,577
2015-16	\$768,980	\$568,608	\$1,776,411	\$1,268,767	\$1,384,083	\$1,300,922	\$575,701	\$656,965	\$1,421,739	\$2,274,978	\$1,847,480	\$1,702,865	\$15,547,498
2016-17	\$819,179	\$596,552	\$1,909,793	\$1,358,224	\$1,313,140	\$1,386,385	\$747,178	\$722,225	\$1,604,192	\$2,410,778			\$12,867,649



City of South Lake Tahoe Rooms Rented

	<i>Oct</i>	<i>Nov</i>	<i>Dec</i>	<i>Jan</i>	<i>Feb</i>	<i>March</i>	<i>April</i>	<i>May</i>	<i>June</i>	<i>July</i>	<i>Aug</i>	<i>Sept</i>	<i>Year to Date Total</i>
2009-10	28,750	20,908	39,355	41,066	43,923	39,899	26,692	25,764	41,439	65,785	55,781	46,115	475,477
2010-11	28,602	20,506	44,643	44,718	46,656	38,016	29,562	25,006	38,882	67,447	65,884	52,075	501,997
2011-12	30,378	21,282	38,079	28,979	38,920	40,149	30,029	29,478	47,736	64,847	58,558	51,018	479,453
2012-13	30,183	23,447	46,442	46,215	39,121	40,558	25,427	33,031	50,836	70,868	63,567	49,721	519,416
2013-14	33,894	22,228	41,156	32,355	40,951	40,994	31,015	37,413	54,548	76,667	69,787	49,168	530,176
2014-15	43,162	28,676	48,200	45,142	38,962	36,820	31,934	42,741	59,041	75,745	70,026	59,448	579,897
2015-16	51,945	36,173	56,669	57,800	56,716	51,247	37,868	41,535	63,855	84,039	76,476	65,463	679,786
2016-17	52,485	35,490	55,715	57,917	51,771	55,719	47,012	43,964	66,485	87,416			553,974

