

City of South Lake Tahoe Transient Occupancy Tax Report

Revenue Collected in June 2017 for the Month of May 2017

Monthly Activity:	Collected in This Month 2017	Collected in This Month 2016	Month Variance	% Change
Motels	\$154,735.22	\$152,489.22	\$2,246.00	1.47%
Delinquent Motel Payments	\$2,829.80	\$2,652.92	\$176.88	6.67%
Property Management VHR	\$66,005.05	\$78,540.43	(\$12,535.38)	-15.96%
Individual Property Owners	\$13,408.57	\$8,634.63	\$4,773.94	55.29%
Campground	\$7,452.25	\$4,694.08	\$2,758.17	100.00%
Promotion 2%	\$81,476.97	\$82,337.10	(\$860.13)	-1.04%
TOT Totals	\$325,907.86	\$329,348.38	(\$3,440.52)	-1.04%
Total General Fund TOT	\$325,907.86	\$329,348.38	(\$3,440.52)	-1.04%
City Redevelopment TOT	\$81,476.97	\$82,337.10	(\$860.13)	-1.04%
Redevelopment Area TOT	\$314,839.72	\$245,279.37	\$69,560.35	28.36%
Total General Fund Monthly Collections	\$722,224.55	\$656,964.85	\$65,259.70	9.93%
Restricted Measure P TOT 2%	\$132,449.44	\$0.00	\$132,449.44	100.00%

Fiscal Year-to-Date:	2016/17	2015/16	Fiscal Year Variance	% Change
Motels	\$1,497,972.10	\$1,466,163.89	\$31,808.21	2.17%
Delinquent Motel Payments	\$26,521.61	\$26,042.39	\$479.22	1.84%
Property Management VHR	\$1,080,830.93	\$975,527.86	\$105,303.07	10.79%
Individual Property Owners	\$483,878.08	\$461,780.95	\$22,097.13	4.79%
Campground	\$19,924.75	\$6,716.28	\$13,208.47	196.66%
Promotion 2%	\$1,036,649.00	\$979,406.14	\$57,242.86	5.84%
TOT Totals	\$4,145,776.47	\$3,915,637.51	\$230,138.96	5.88%
Total General Fund TOT	\$4,145,776.47	\$3,915,637.51	\$230,138.96	5.88%
City Redevelopment TOT	\$1,036,649.00	\$979,406.14	\$57,242.86	5.84%
Redevelopment Area TOT	\$3,669,432.72	\$3,405,392.23	\$264,040.49	7.75%
Total to Date General Fund Collections	\$8,851,858.19	\$8,300,435.88	\$551,422.31	6.64%
Motel and VHR TOT Audit Collections	\$63,703.52			
Total TOT Collections	\$8,915,561.71			
Restricted Measure P TOT 2%	\$1,026,058.77	\$0.00	\$1,026,058.77	100.00%

TOT is collected and recorded as revenue in the General Ledger in the month following the actual motel stay.

Motel and VHR TOT Audit Collections are actual amounts collected. Does not include balances owed but not yet paid.

Restricted Measure P TOT 2% was implemented 1/1/2017.

City of South Lake Tahoe

Room Rentals By Zone Month of May 2017

		<i>Receipts</i>	<i>Taxable Rents</i>	Total Room Nights Available	Room Nights Rented	Occupancy Percentage	Average Room Price
		Gross Rentals Reported	Net Rentals Reported				
Zone 1	2017	\$3,831,319	\$3,738,310	109,244	30,216	28%	\$127
	2016	\$3,295,105	\$3,163,516	108,221	27,995	26%	\$118
	Variance	\$536,214	\$574,794	1,023	2,221	2%	\$9
Zone 2	2017	\$693,187	\$657,518	40,672	7,179	18%	\$97
	2016	\$624,112	\$599,703	38,781	6,813	18%	\$92
	Variance	\$69,075	\$57,815	1,891	366	0%	\$5
Zone 3	2017	\$517,276	\$491,931	16,492	3,934	24%	\$131
	2016	\$500,058	\$475,713	16,492	3,817	23%	\$131
	Variance	\$17,218	\$16,218	0	117	1%	\$0
Zone 4	2017	\$215,686	\$112,106	11,997	2,065	17%	\$104
	2016	\$184,519	\$93,380	11,966	1,622	14%	\$114
	Variance	\$31,167	\$18,726	31	443	3%	(\$10)
Zone 5	2017	\$86,939	\$59,894	7,254	570	8%	\$153
	2016	\$80,990	\$61,210	6,758	792	12%	\$102
	Variance	\$5,949	(\$1,316)	496	(222)	-4%	\$51
Total All Zones	2017	\$5,344,407	\$5,059,759	185,659	43,964	24%	\$122
	2016	\$4,684,784	\$4,393,522	182,218	41,039	23%	\$114
	Variance	\$659,623	\$666,237	3,441	2,925	1%	\$8

Zone Descriptions:

- Zone 1 Stateline Area
- Zone 2 Ski Run, Heavenly and Bijou Areas
- Zone 3 Al Tahoe Area
- Zone 4 Sierra Tract, East Y Area
- Zone 5 West Y and Emerald Bay Road Areas

Vacation Home Rentals - Managed by Rental Agents

	<i>Taxable Rents</i>	Total Units Available	Total Units Rented	Occupancy Percentage	Average Room Price
	Net Rentals Reported				
2017	\$1,225,281.29	29,543	4,638	16%	\$264.18
2016	\$1,312,644.00	\$28,613.00	\$4,789.00	17%	\$274.10
Variance	(\$87,362.71)	930	(151)	-1%	(\$9.92)
	(\$87,362.71)	\$930.00	(\$151.00)		

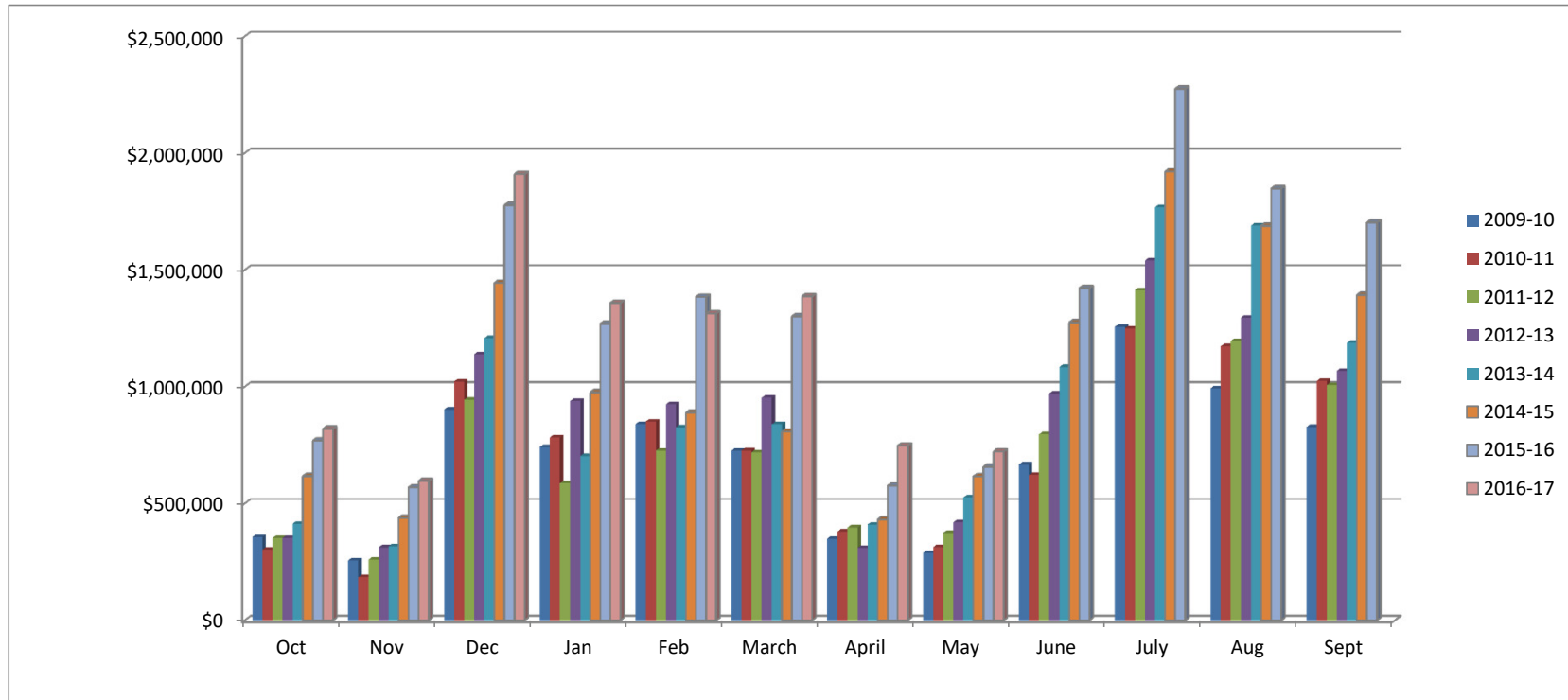
City of South Lake Tahoe

Room Rentals By Unit Size Month of May 2017

		<i>Receipts</i> Gross Rentals Reported	<i>Taxable rents</i> Net Rentals Reported	Total Rooms Nights Available	Room Nights Rented	Occupancy Percentage	Average Room Price
Units 1-15	2017	\$221,702	\$127,812	10,199	1,073	11%	\$207
	2016	\$197,814	\$110,788	10,478	977	9%	\$202
	Variance	\$23,888	\$17,024	(279)	96	2%	\$5
Units 16-30	2017	\$397,598	\$233,639	26,753	2,502	9%	\$159
	2016	\$389,331	\$232,615	24,428	2,613	11%	\$149
	Variance	\$8,267	\$1,024	2,325	(111)	-2%	\$10
Units 31-50	2017	\$370,940	\$354,536	17,267	3,714	22%	\$100
	2016	\$306,110	\$273,385	18,445	3,623	20%	\$84
	Variance	\$64,830	\$81,151	(1,178)	91	2%	\$16
Units 51-75	2017	\$724,909	\$719,809	28,582	8,840	31%	\$82
	2016	\$680,492	\$670,642	25,265	8,717	35%	\$78
	Variance	\$44,417	\$49,167	3,317	123	-4%	\$4
Units 76-125	2017	\$1,079,199	\$1,079,199	28,551	8,284	29%	\$130
	2016	\$986,033	\$986,033	29,295	7,484	26%	\$132
	Variance	\$93,166	\$93,166	(744)	800	3%	(\$2)
Units 126+	2017	\$2,550,059	\$2,544,764	74,307	19,551	26%	\$130
	2016	\$2,125,004	\$2,120,059	74,307	17,625	24%	\$121
	Variance	\$425,055	\$424,705	0	1,926	2%	\$9
Total All Unit Sizes	2017	\$5,344,407	\$5,059,759	185,659	43,964	24%	\$122
	2016	\$4,684,784	\$4,393,522	182,218	41,039	23%	\$114
	Variance	\$659,623	\$666,237	3,441	2,925	1%	\$8

**City of South Lake Tahoe
TOT Collected
(Excluding audit collections and 2% Measure P TOT)**

	<i>Oct</i>	<i>Nov</i>	<i>Dec</i>	<i>Jan</i>	<i>Feb</i>	<i>March</i>	<i>April</i>	<i>May</i>	<i>June</i>	<i>July</i>	<i>Aug</i>	<i>Sept</i>	<i>Year to Date Total</i>
2009-10	\$356,210	\$256,067	\$901,625	\$741,264	\$839,673	\$725,826	\$349,303	\$287,825	\$666,724	\$1,256,002	\$992,942	\$827,005	\$8,200,466
2010-11	\$302,804	\$183,646	\$1,022,085	\$782,771	\$850,362	\$726,854	\$379,079	\$312,732	\$621,865	\$1,249,500	\$1,172,591	\$1,023,480	\$8,627,769
2011-12	\$351,807	\$259,005	\$944,112	\$586,008	\$726,215	\$718,847	\$396,638	\$374,560	\$795,750	\$1,412,969	\$1,195,854	\$1,006,606	\$8,768,372
2012-13	\$352,360	\$311,214	\$1,139,117	\$938,361	\$924,117	\$952,435	\$309,956	\$419,142	\$970,739	\$1,539,841	\$1,295,749	\$1,067,658	\$10,220,690
2013-14	\$413,240	\$316,321	\$1,207,678	\$702,471	\$826,225	\$838,573	\$409,738	\$525,592	\$1,083,420	\$1,768,106	\$1,689,276	\$1,187,000	\$10,967,640
2014-15	\$616,901	\$438,053	\$1,443,697	\$975,930	\$888,351	\$807,169	\$431,120	\$615,934	\$1,275,041	\$1,920,591	\$1,688,228	\$1,392,562	\$12,493,577
2015-16	\$768,980	\$568,608	\$1,776,411	\$1,268,767	\$1,384,083	\$1,300,922	\$575,701	\$656,965	\$1,421,739	\$2,274,978	\$1,847,480	\$1,702,865	\$15,547,498
2016-17	\$819,179	\$596,552	\$1,909,793	\$1,358,224	\$1,313,140	\$1,386,385	\$747,178	\$722,225					\$8,852,678



City of South Lake Tahoe Rooms Rented

	<i>Oct</i>	<i>Nov</i>	<i>Dec</i>	<i>Jan</i>	<i>Feb</i>	<i>March</i>	<i>April</i>	<i>May</i>	<i>June</i>	<i>July</i>	<i>Aug</i>	<i>Sept</i>	<i>Year to Date Total</i>
2009-10	28,750	20,908	39,355	41,066	43,923	39,899	26,692	25,764	41,439	65,785	55,781	46,115	475,477
2010-11	28,602	20,506	44,643	44,718	46,656	38,016	29,562	25,006	38,882	67,447	65,884	52,075	501,997
2011-12	30,378	21,282	38,079	28,979	38,920	40,149	30,029	29,478	47,736	64,847	58,558	51,018	479,453
2012-13	30,183	23,447	46,442	46,215	39,121	40,558	25,427	33,031	50,836	70,868	63,567	49,721	519,416
2013-14	33,894	22,228	41,156	32,355	40,951	40,994	31,015	37,413	54,548	76,667	69,787	49,168	530,176
2014-15	43,162	28,676	48,200	45,142	38,962	36,820	31,934	42,741	59,041	75,745	70,026	59,448	579,897
2015-16	51,945	36,173	56,669	57,800	56,716	51,247	37,868	41,535	63,855	84,039	76,476	65,463	679,786
2016-17	52,485	35,490	55,715	57,917	51,771	55,719	47,012	43,964					400,073

