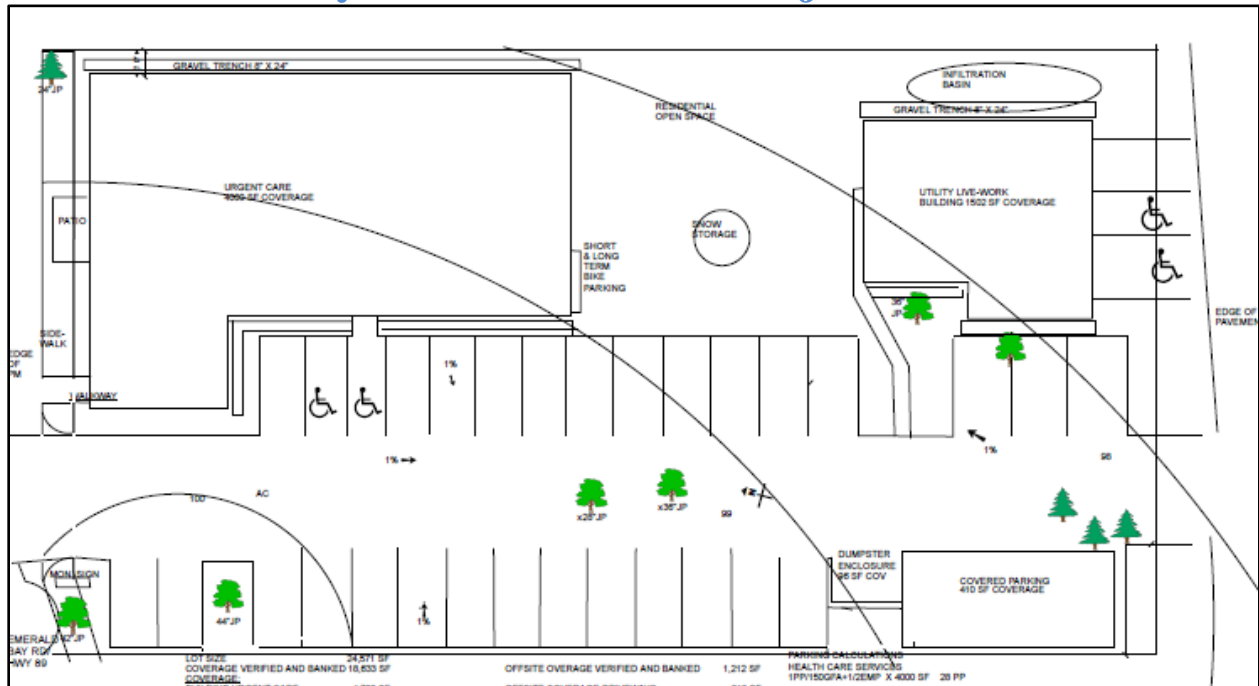


941 Emerald Bay Road Mixed-Use Project



Project Address: 941 Emerald Bay Road

Project Description: Development of a 4,000 square foot mixed-use project that will consist of a health care facility, commercial retail space and three second-floor live-work residential units. The project will include a public plaza, landscaping and will incorporate materials and architectural features consistent with the Tahoe Valley Area Plan design standards.

Zoning District: [Tahoe Valley Area Plan – Town Center Core District](#)

Status: Approved With Conditions

Decision Making Authority: Planning Commission

City Contact Person: John Hitchcock
(530)542-7472
jhitchcock@cityofslt.us