

City of South Lake Tahoe Transient Occupancy Tax Report

Revenue Collected in October 2019 for the Month of September 2019

Monthly Activity:	Collected in This Month 2019	Collected in This Month 2018	Month Variance	% Change
Motels	\$245,502.08	\$325,169.41	(\$79,667.33)	-24.50%
Delinquent Motel Payments	\$3,926.93	\$2,276.90	\$1,650.03	72.47%
Property Management VHR	\$154,232.90	\$164,227.21	(\$9,994.31)	-6.09%
Individual Property Owners (VHR)	\$336,682.73	\$360,301.57	(\$23,618.84)	-6.56%
Shared VHRs	\$20,053.37	\$7,278.15	\$12,775.22	175.53%
Campground	\$1,213.36	\$2,515.97	(\$1,302.61)	-51.77%
Promotion 2%	\$253,870.45	\$287,256.40	(\$33,385.95)	-11.62%
TOT Totals	\$1,015,481.82	\$1,149,025.61	(\$133,543.79)	-11.62%
Total General Fund TOT	\$1,015,481.82	\$1,149,025.61	(\$133,543.79)	-11.62%
City Redevelopment TOT	\$253,870.45	\$287,256.40	(\$33,385.95)	-11.62%
Redevelopment Area TOT	\$712,649.20	\$569,925.36	\$142,723.84	25.04%
Total General Fund Monthly Collections	\$1,982,001.47	\$2,006,207.37	(\$24,205.90)	-1.21%
Restricted Measure P TOT 2%	\$376,566.35	\$383,958.89	(\$7,392.54)	-1.93%

Fiscal Year-to-Date:	2018/19	2017/18	Fiscal Year Variance	% Change
Motels	\$3,151,668.09	\$3,041,216.44	\$110,451.65	3.63%
Delinquent Motel Payments	\$54,193.39	\$28,040.05	\$26,153.34	93.27%
Property Management VHR	\$2,310,504.90	\$2,338,056.32	(\$27,551.42)	-1.18%
Individual Property Owners	\$1,085,292.40	\$1,074,249.78	\$11,042.62	1.03%
Shared VHRs	\$42,741.59	\$16,148.08	\$26,593.51	164.69%
Campground	\$40,091.15	\$50,159.94	(\$10,068.79)	-20.07%
Promotion 2%	\$2,228,689.21	\$2,182,623.57	\$46,065.64	2.11%
TOT Totals	\$8,913,180.73	\$8,730,494.18	\$182,686.55	2.09%
Total General Fund TOT	\$8,913,180.73	\$8,730,494.18	\$182,686.55	2.09%
City Redevelopment TOT	\$2,228,689.21	\$2,182,623.57	\$46,065.64	2.11%
Redevelopment Area TOT	\$6,978,996.69	\$6,505,357.79	\$473,638.90	7.28%
Total to Date General Fund Collections	\$18,120,866.63	\$17,418,475.54	\$702,391.09	4.03%
Motel and VHR TOT Audit Collections	\$124,218.09			
Total TOT Collections	\$18,245,084.72			
Restricted Measure P TOT 2%	\$3,435,411.95	\$3,307,392.95	\$128,019.00	3.87%

TOT is collected and recorded as revenue in the General Ledger in the month following the actual motel stay.

Motel and VHR TOT Audit Collections are actual amounts collected. Does not include balances owed but not yet paid.

Restricted Measure P TOT 2% was implemented 1/1/2017.

City of South Lake Tahoe

Room Rentals By Zone Month of September 2019

		<i>Receipts</i>	<i>Taxable Rents</i>	Total Room Nights Available	Room Nights Rented	Occupancy Percentage	Average Room Price
		Gross Rentals Reported	Net Rentals Reported				
Zone 1	2019	\$7,744,541	\$7,603,821	105690	47529	45%	\$163
	2018	\$7,427,832	\$7,294,181	104490	49827	48%	\$149
	Variance	\$316,709	\$309,640	1200	(2298)	-3%	\$14
Zone 2	2019	\$1,486,840	\$1,378,700	34620	11605	34%	\$128
	2018	\$1,521,650	\$1,441,038	34140	11908	35%	\$128
	Variance	(\$34,810)	(\$62,338)	480	(303)	-1%	\$0
Zone 3	2019	\$906,171	\$877,986	15960	5588	35%	\$162
	2018	\$1,077,605	\$1,064,440	15960	6166	39%	\$175
	Variance	(\$171,434)	(\$186,454)	0	(578)	-4%	(\$13)
Zone 4	2019	\$309,054	\$222,477	11610	3451	30%	\$90
	2018	\$308,601	\$217,844	11610	3038	26%	\$102
	Variance	\$453	\$4,633	0	413	4%	(\$12)
Zone 5	2019	\$166,309	\$119,406	7710	1071	14%	\$155
	2018	\$152,332	\$122,465	6090	1016	17%	\$150
	Variance	\$13,977	(\$3,059)	1620	55	-3%	\$5
Total All Zones	2019	\$10,612,915	\$10,202,390	175590	69244	39%	\$153
	2018	\$10,488,020	\$10,139,968	172290	71955	42%	\$146
	Variance	\$124,895	\$62,422	3300	(2711)	-3%	\$7

Zone Descriptions:

- Zone 1 Stateline Area
- Zone 2 Ski Run, Heavenly and Bijou Areas
- Zone 3 Al Tahoe Area
- Zone 4 Sierra Tract, East Y Area
- Zone 5 West Y and Emerald Bay Road Areas

Vacation Home Rentals - Managed by Rental Agents

	<i>Taxable Rents</i>			Occupancy Percentage	Average Room Price
	Net Rentals Reported	Total Units Available	Total Units Rented		
2019	\$2,747,794	26670	8640	32%	\$318.03
2018	\$2,910,250	28560	9130	32%	\$318.76
Variance	(\$162,456)	(1890)	(490)	0%	(\$0.73)

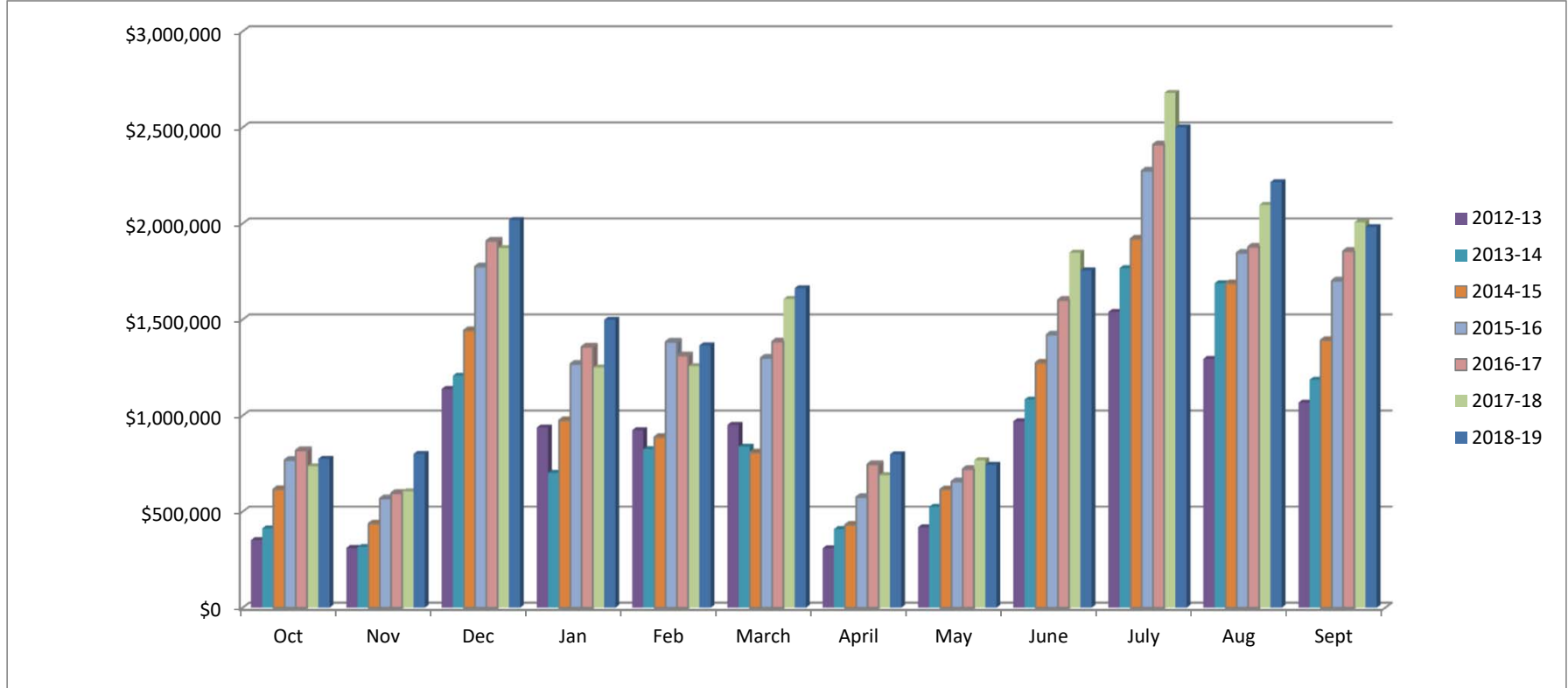
City of South Lake Tahoe

Room Rentals By Unit Size Month of September 2019

		<i>Receipts</i> Gross Rentals Reported	<i>Taxable rents</i> Net Rentals Reported	Total Rooms Nights Available	Room Nights Rented	Occupancy Percentage	Average Room Price
Units 1-15	2019	\$409,881	\$303,467	10350	2628	25%	\$156
	2018	\$398,588	\$305,578	9030	2364	26%	\$169
	Variance	\$11,293	(\$2,111)	1320	264	-1%	(\$13)
Units 16-30	2019	\$837,082	\$601,335	26880	5199	19%	\$161
	2018	\$807,035	\$603,318	24840	4994	20%	\$162
	Variance	\$30,047	(\$1,983)	2040	205	-1%	(\$1)
Units 31-50	2019	\$759,819	\$731,404	16680	5787	35%	\$131
	2018	\$781,913	\$756,513	16680	5906	35%	\$132
	Variance	(\$22,094)	(\$25,109)	0	(119)	0%	(\$1)
Units 51-75	2019	\$1,462,331	\$1,462,331	25560	11737	46%	\$125
	2018	\$1,515,593	\$1,515,593	25560	13033	51%	\$116
	Variance	(\$53,262)	(\$53,262)	0	(1296)	-5%	\$9
Units 76-125	2019	\$2,324,439	\$2,284,490	24210	13128	54%	\$177
	2018	\$2,340,125	\$2,320,675	24270	13405	55%	\$175
	Variance	(\$15,686)	(\$36,185)	(60)	(277)	-1%	\$2
Units 126+	2019	\$4,819,364	\$4,819,364	71910	30765	43%	\$157
	2018	\$4,644,766	\$4,638,291	71910	32253	45%	\$144
	Variance	\$174,598	\$181,073	0	(1488)	-2%	\$13
Total All Unit Sizes	2019	\$10,612,915	\$10,202,390	175590	69244	39%	\$153
	2018	\$10,488,020	\$10,139,968	172290	71955	42%	\$146
	Variance	\$124,895	\$62,422	3300	(2711)	-3%	\$7

City of South Lake Tahoe
TOT Collected
 (Excluding audit collections and 2% Measure P TOT)

	<i>Oct</i>	<i>Nov</i>	<i>Dec</i>	<i>Jan</i>	<i>Feb</i>	<i>March</i>	<i>April</i>	<i>May</i>	<i>June</i>	<i>July</i>	<i>Aug</i>	<i>Sept</i>	<i>Year to Date Total</i>
2012-13	\$352,360	\$311,214	\$1,139,117	\$938,361	\$924,117	\$952,435	\$309,956	\$419,142	\$970,739	\$1,539,841	\$1,295,749	\$1,067,658	\$10,220,690
2013-14	\$413,240	\$316,321	\$1,207,678	\$702,471	\$826,225	\$838,573	\$409,738	\$525,592	\$1,083,420	\$1,768,106	\$1,689,276	\$1,187,000	\$10,967,640
2014-15	\$616,901	\$438,053	\$1,443,697	\$975,930	\$888,351	\$807,169	\$431,120	\$615,934	\$1,275,041	\$1,920,591	\$1,688,228	\$1,392,562	\$12,493,577
2015-16	\$768,980	\$568,608	\$1,776,411	\$1,268,767	\$1,384,083	\$1,300,922	\$575,701	\$656,965	\$1,421,739	\$2,274,978	\$1,847,480	\$1,702,865	\$15,547,498
2016-17	\$819,179	\$596,552	\$1,909,793	\$1,358,224	\$1,313,140	\$1,385,566	\$747,178	\$722,225	\$1,602,262	\$2,410,778	\$1,878,524	\$1,856,492	\$16,599,915
2017-18	\$736,201	\$605,917	\$1,872,165	\$1,250,476	\$1,257,575	\$1,607,302	\$690,142	\$767,936	\$1,848,099	\$2,679,628	\$2,096,826	\$2,006,207	\$17,418,476
2018-19	\$775,191	\$800,725	\$2,018,756	\$1,498,862	\$1,365,859	\$1,663,775	\$798,914	\$744,356	\$1,756,308	\$2,500,581	\$2,215,538	\$1,982,001	\$18,120,867



City of South Lake Tahoe Rooms Rented

	<i>Oct</i>	<i>Nov</i>	<i>Dec</i>	<i>Jan</i>	<i>Feb</i>	<i>March</i>	<i>April</i>	<i>May</i>	<i>June</i>	<i>July</i>	<i>Aug</i>	<i>Sept</i>	<i>Year to Date Total</i>
2012-13	30,183	23,447	46,442	46,215	39,121	40,558	25,427	33,031	50,836	70,868	63,567	49,721	519,416
2013-14	33,894	22,228	41,156	32,355	40,951	40,994	31,015	37,413	54,548	76,667	69,787	49,168	530,176
2014-15	43,162	28,676	48,200	45,142	38,962	36,820	31,934	42,741	59,041	75,745	70,026	59,448	579,897
2015-16	51,945	36,173	56,669	57,800	56,716	51,247	37,868	41,535	63,855	84,039	76,476	65,463	679,786
2016-17	52,485	35,490	55,715	57,917	51,771	55,719	47,012	43,964	66,485	87,416	74,401	67,608	695,983
2017-18	50,057	35,157	49,640	50,056	51,774	61,383	41,315	45,832	69,390	89,070	78,397	71,955	694,026
2018-19	51,115	43,850	57,807	60,319	51,675	57,424	47,020	41,658	67,046	85,023	82,754	69,244	714,935

